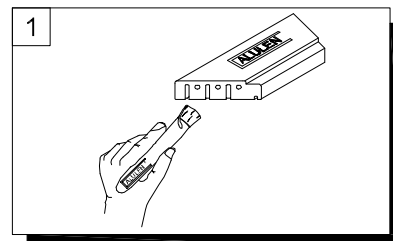
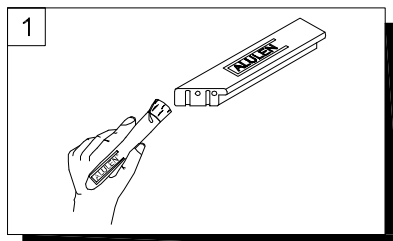


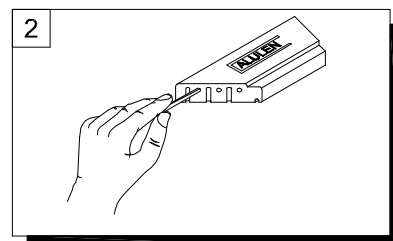
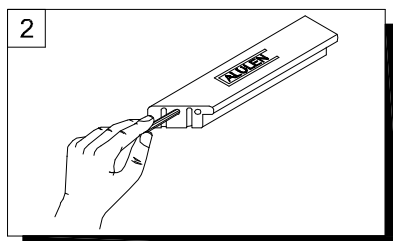
SG.50 Telaio

SG.70 Anta

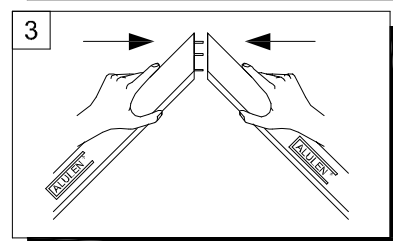
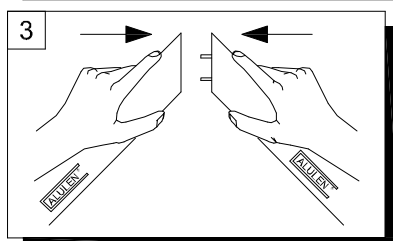
1. Spalmare la colla vinilica EB110000000, su entrambi i lati da assemblare (fig.1)



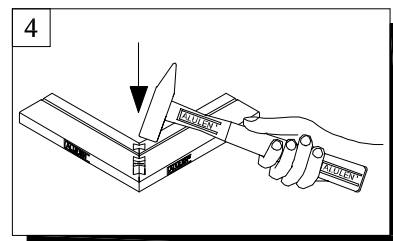
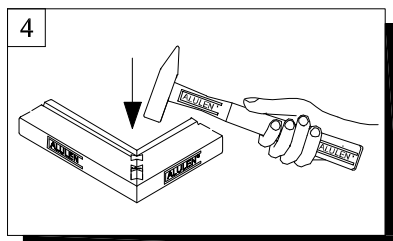
2. Infilare negli appositi fori, gli spinotti in legno (fig.2)



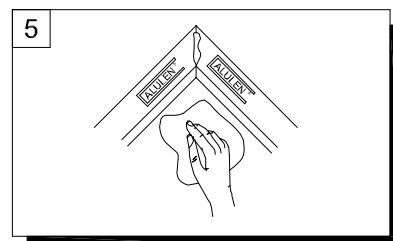
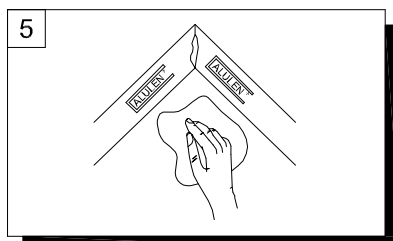
3. Unire le parti in legno facendole aderire perfettamente (fig.3)



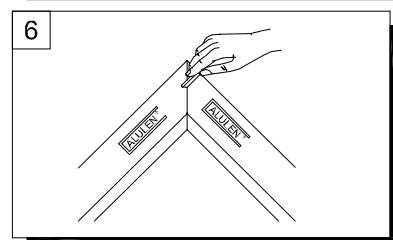
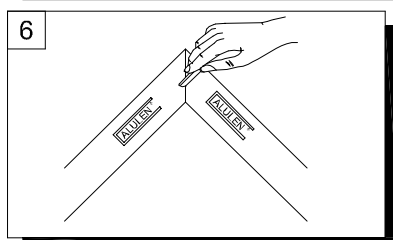
4. Inserire i tasselli di fissaggio legno HOFW42, nelle apposite sedi a coda di rondine. Utilizzare un martello per spingerli fino in fondo (fig.4) E' opportuno effettuare l'operazione su un piano di lavoro liscio e pulito.



5. Pulire accuratamente la colla vinilica in eccesso (fig.5)



6. Quando la colla risulterà completamente asciugata, procedere alla stuccatura degli angoli con la cera ritocco (fig.6)



7. Pulire accuratamente le parti assemblate con l'impregnante protettivo per legno (fig.7)

